

announcement recognizing the top three prints Saturday 1-4 p.m. Through Feb. 26. Washington Printmakers Gallery, 8230 Georgia Ave., Silver Spring. 301-273-3660. www.washingtonprintmakers.com. Free.

“Dead Man’s Cell Phone” In Sarah Ruhl’s comedy, a man dies in a diner and the stranger at the next table answers his cellphone. She winds up getting involved with his family and his life. Directed by Jacy D’Aiutolo. Presented by Silver Spring Stage. Friday at 8 p.m., closes Saturday at 8 p.m. Silver Spring Stage, 10145 Colesville Rd., Silver Spring. 301-593-6036. www.ssstage.org. \$20, seniors and students \$18.

Art at Gallery B The group exhibit in Bethesda spotlights artists Frank Cappello of Potomac, Emily Lane of Potomac, Donna K. McGee of Bethesda and Andy Unger of Rockville. Closes Saturday. Gallery B, 7700 Wisconsin Ave., Suite E, Bethesda. www.bethesda.org/bethesda/gallery-b. 301-215-7990. Free.

Art at Waverly Street Gallery Two shows are on display: “Memories,” an exhibition of ceramics and mixed media by Karin Abromaitis; and “Faces,” paintings by Shari Hookman Berger. There will also be new works by gallery artists. Both shows close Saturday. Waverly Street Gallery, 4600 East West Hwy., Bethesda. 301-951-9441. www.waverlystreetgallery.com. Free.

“Small Treasures” This exhibit includes pieces by Joan Grisswold, Werner Drewes, Dena Lyons and other artists. Opens Saturday. Through Feb. 22. Marin-Price Galleries, 7022 Wisconsin Ave., Chevy Chase. 301-718-0622. www.marin-pricegalleries.com. Free.

“Stepping Over the Line” The works in this multimedia show try to take a different perspective on art, mixing varied uses of color with intense and emotional viewpoints. Closes Saturday. Mansion at Strathmore, 10701 Rockville Pike, North Bethesda. 301-581-5100. www.strathmore.org. Free.

SUN | 05

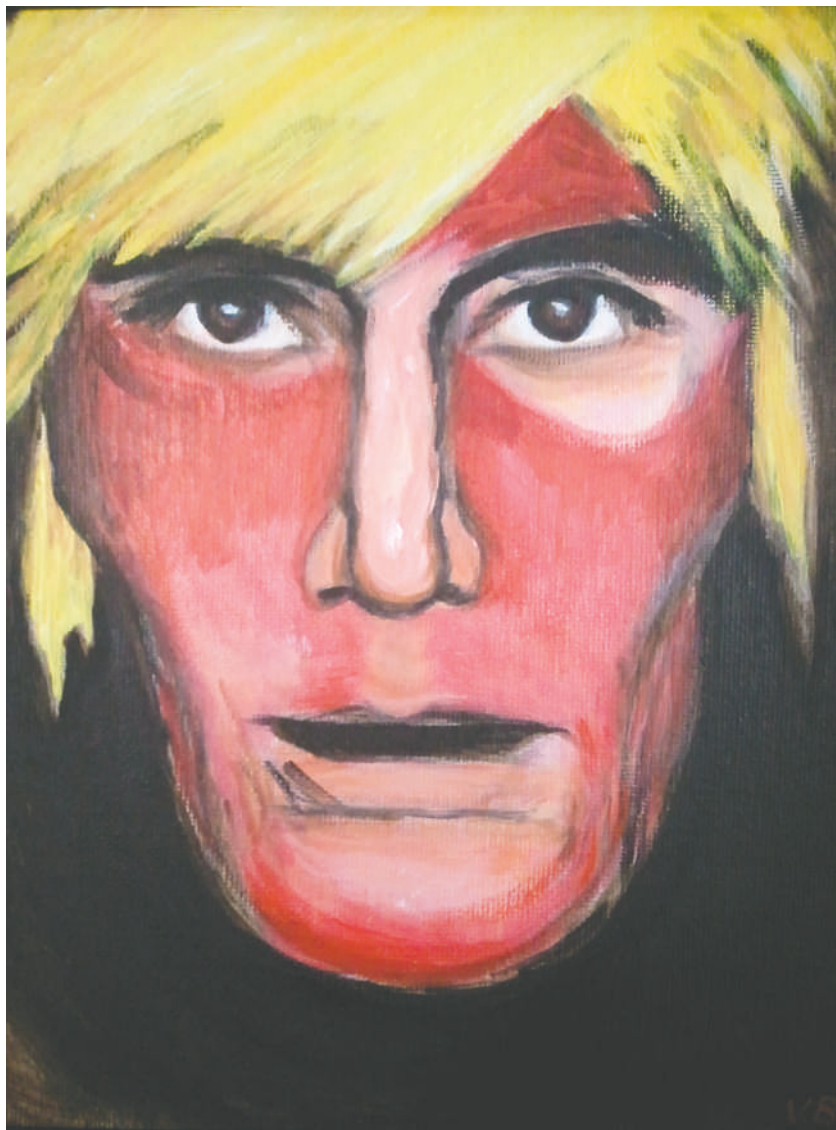
“The Royal Family” George S. Kaufman and Edna Ferber’s play about the Cavendish family of actors parodies the Barrymore family. The comedy from 1927 focuses on siblings John and Ethel. The Rockville Little Theatre production is directed by Laurie T. Freed. Friday-Saturday at 8 p.m., closes Sunday at 2 p.m. F. Scott Fitzgerald Theatre, Rockville Civic Center Park, 603 Edmonston Dr., Rockville. 240-314-8690. 301-221-5434. www.rockvillemd.gov/theatre. www.rlt-online.org. \$16, seniors and students \$14.

Art at Brookside Gardens A mixed-media

exhibit of pieces on paper and canvas by eight artists. Closes Sunday. Brookside Gardens, Visitors Center, 1800 Glenallan Ave., Wheaton. 301-962-1400. www.brooksidegardens.org. Free.

MON | 06


Gene Kelly retrospective Kelly, the king of big-screen musicals, is celebrated a century after his birth with this film series. This week’s movies are “Anchors Aweigh” (1945), which also stars Frank Sinatra and includes Kelly’s duet with Jerry, the cartoon mouse of “Tom and Jerry” fame (Sunday at 3:45 p.m., Monday at 6 p.m.); and “Cover Girl” (1944), which pairs



FROM THE ARTIST

Vian Shamounki Borchert’s “Andy Warhol,” on exhibit at the Arts Barn.

Get our free app

 The brand-new (and free!) Going Out Guide iPhone app is a great way to explore all the area’s activities. Find a movie near you, or look at our hand-selected lists of the month’s best concerts, top apple orchards or best bars. If you have our original app on your device, look for the update prompt. If not, go to the App Store and check it out. Take it for a spin, and let us know what you think by dropping us a line at goingoutguide@washingtonpost.com. You can also join Going Out Guide on Facebook, follow us on Twitter @goingoutguide, or subscribe to our newsletters at washingtonpost.com/newsletters

Kelly with Rita Hayworth (Saturday at 11 a.m., Sunday at 6:30 p.m., Tuesday at 9:20 p.m.). The coming weeks bring “Singin’ in the Rain” and “An American in Paris.” Through April 5. AFI Silver Theatre, 8633 Colesville Rd., Silver Spring. 301-495-6720. www.afi.com/silver. \$11, seniors \$9, children \$7.

TUE | 07

“23 + 23” The 23 member artists of the Waverly Street Gallery invited 23 other artists to join them for this show. The 46 artists contributed paintings, sculpture, photography, ceramics and more. Opens Tuesday. Reception Feb. 10 from 6-9 p.m. Through March 3. Waverly Street Gallery, 4600 East West Hwy., Bethesda. 301-951-9441. www.waverlystreetgallery.com. Free.

WED | 08

Screen Valentines film series The AFI Silver series of great on-screen romances from each of the past eight decades is back. This week: “The African Queen” (1951), John Huston’s film that paired Katharine Hepburn and Humphrey Bogart as an odd couple on a riverboat (Wednesday at 6:30 p.m.); and “The Awful Truth” (1937), starring Cary Grant and Irene Dunne as a divorcing couple (Friday at 7:45 p.m., Saturday at 3:45 p.m., Sunday at 1:45 p.m.). Through March 7. AFI Silver Theatre, 8633 Colesville Rd., Silver Spring. 301-495-6720. www.afi.com/silver. \$11, seniors \$9, children \$7.

— Compiled by Mark Berman
from staff reports

TO SUBMIT AN ITEM

E-mail: mocoliving@washpost.com **Fax:** 301-279-5665 **Mail:** Community Events, Montgomery Local Living, The Washington Post, 51 Monroe St., Suite 500, Rockville, Md. 20850

Details: Announcements are accepted on a space-available basis and must be received at least 14 days before the Thursday publication date. Include event name, dates, times, exact address, prices and a publishable contact phone number.